

KRYSSHOLM

KRYSSHOLM

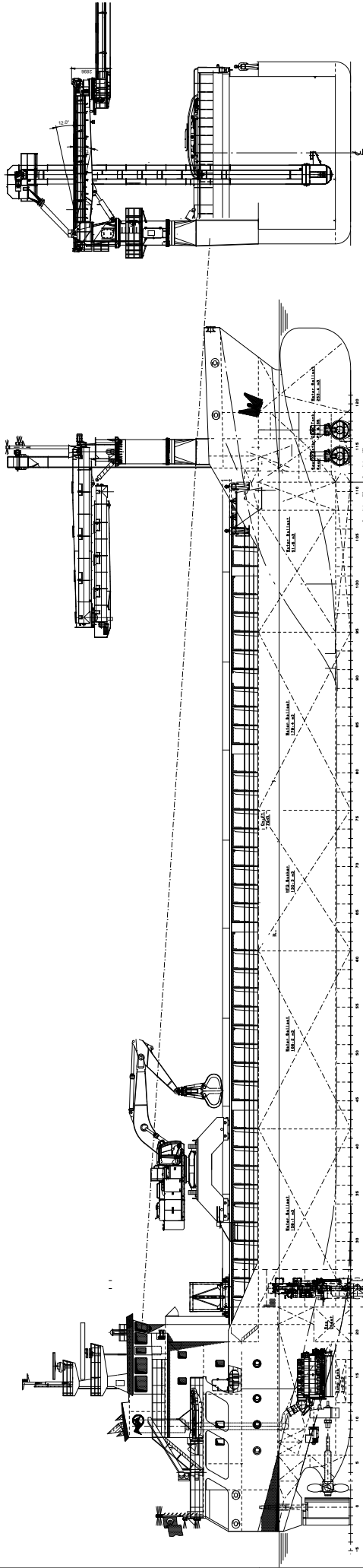
Main details

Type	Singledecker
Flag	NOR
Built year	2011
IMO	9579468
MMSI	271042556
Call sign	LAXK5
DWAT	4284
DWCC S/W	3750 / 3600 mt
Hold capacity	abt 170 000 cbft
GT/NT	2870 / 1427
LOA	89,9 m
Beam	13,6 m
Draft (fully laden)	5,35 m
Airdraft (ballast)	22,50 m
Class	R.I.N.A
P&I	Skuld
HA dims	61,6 x 11,4 m
HO dims	53,2 x 11,4 x 7,9 m
Bulkheads	2, steel
Speed	10 knots
Hatchcovers	Pontoons, Coops & Nieborg
All details given in good faith, but without guarantee.	

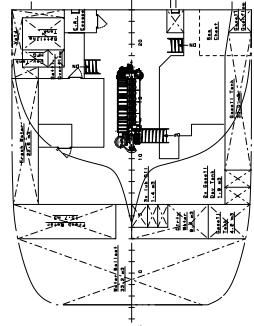


SCAN-SHIPPING

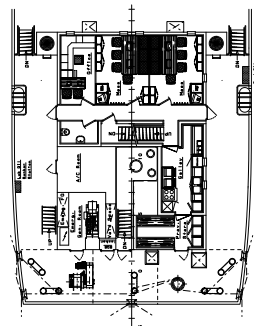
Nøstetorget 5 N-5011 Bergen
+47 55 55 84 60
scanshipping@scanshipping.



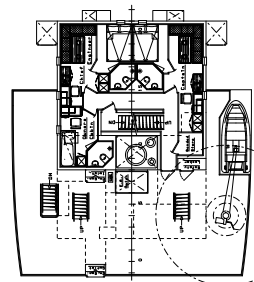
Engine Deck



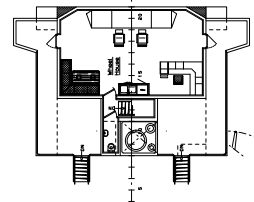
Peep Deck



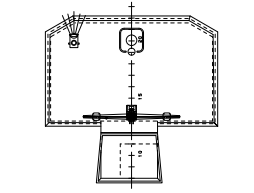
Captain's Deck



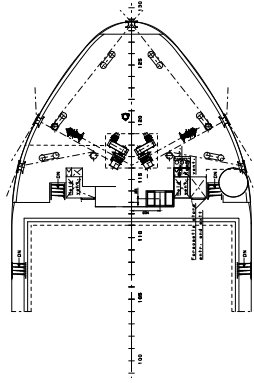
Wheelhouse Deck



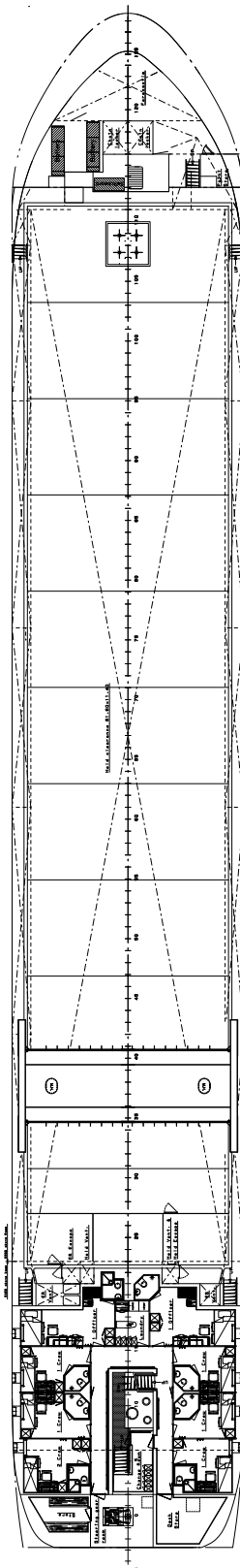
Top Deck



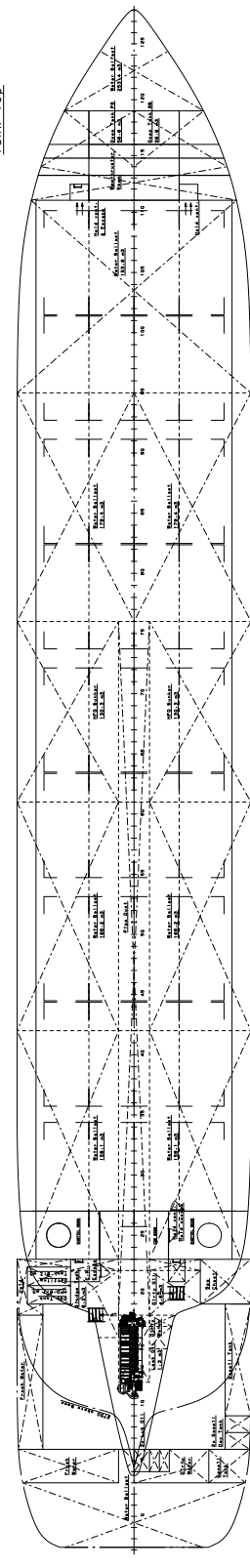
Forecastle Deck



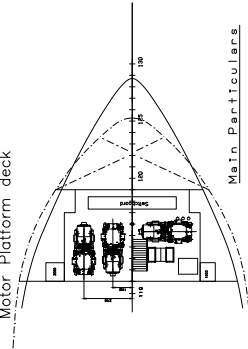
Main Deck



Tank Top



Motor Platform deck



Main Particulars

Length o/a	84.95 m
Length m/l	13.80 m
Beam m/l	5.20 m
Total Depth	11.50 m
Engine Output	1500 kW
Max. Speed	18.00 knots
Capacity 20 ft Hold	1700 tons
Capacity 20 ft Deck	440 tons
Capacity 20 ft Total	2140 tons
Capacity 20 ft Deck	440 tons
Capacity 20 ft Total	2140 tons

WWT International Shipyard B.V.
 West-Indische Schipbouw, Rotterdam
 1000 AA Amsterdam, The Netherlands
 Tel: +31 (0)20 486 2000
 Fax: +31 (0)20 486 2001
 E-mail: info@wwt.nl

NO. 000-001	Rev. 1
DATE	21-02-2008
BY	08-030
APP. BY	
SCALE	1:1

General Arrangement